

Public Participation Opportunities

Cheniere Midstream values its relationships with the communities and encourages input of all stakeholders along the project route. Cheniere Midstream is committed to seeking out involvement from various residents and groups so that those who are interested can contribute during the public participation process. Opportunities for the public to provide comments on the project will be available through the Federal Energy Regulatory Commission (FERC). For additional information or questions, please contact Matt Barr at Matt.Barr@cheniere.com.



community meeting in Texas



MATT BARR
Director,
Government and Public Affairs

700 Millam Street, Suite 1900
Houston, Texas 77002
phone: 713.375.5000
fax: 713.375.6000

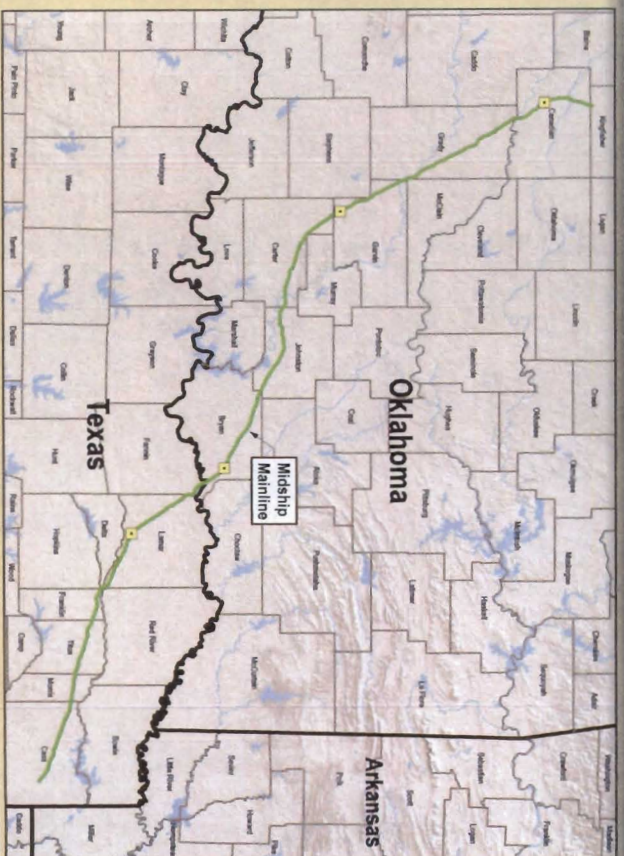
direct: 713.375.5660
direct fax: 713.375.6660
cell: 214.683.9037
matt.barr@cheniere.com
www.cheniere.com

Cheniere Midstream Holdings, Inc. is a subsidiary of Cheniere Energy, Inc., a Houston-based company primarily engaged in LNG related businesses. This brochure contains certain statements that may include "forward-looking statements." All statements, other than statements of historical fact, include herein are "forward-looking statements." Although Cheniere Holdings, Inc. believes that the expectations reflected in these forward-looking statements are reasonable, they do involve assumptions, risks and uncertainties, and these expectations may prove to be incorrect. Additional information about Cheniere Energy, Inc. may be found at www.cheniere.com.



Cheniere Midstream's Proposed Midcontinent Supply Header Interstate Pipeline (MIDSHIP) Project

Cheniere Midstream Holdings, Inc. and/or one or more of its affiliates ("Cheniere Midstream") plans to develop a pipeline from Central Oklahoma to Northeast Texas connecting new gas production in the Anadarko Basin to growing Gulf Coast markets.



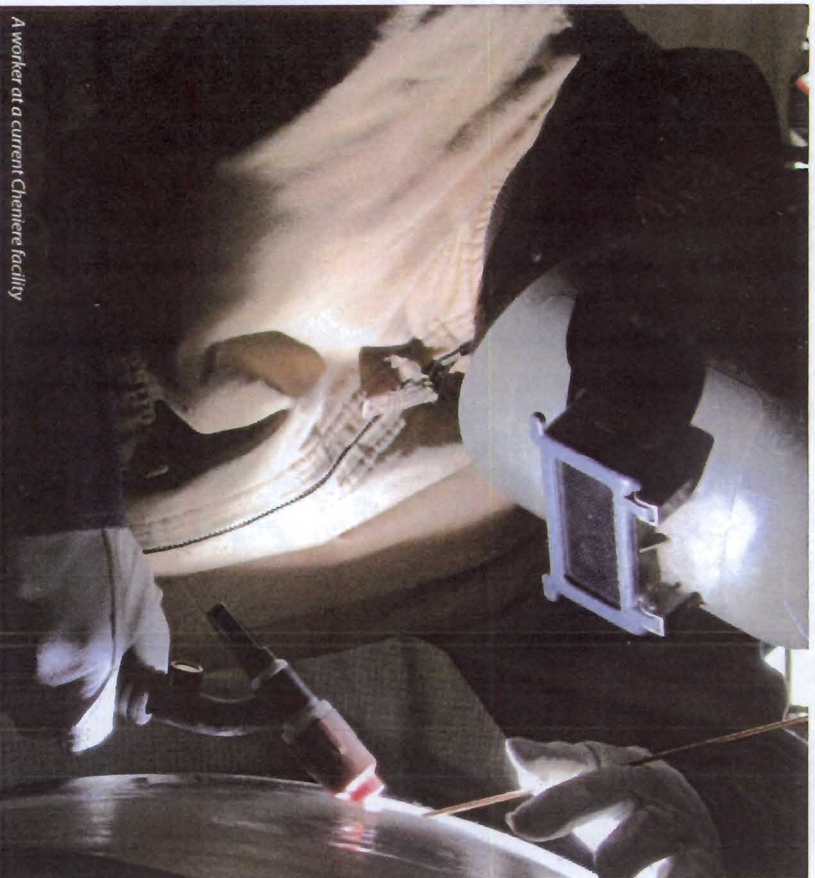
Legend

- Cheniere Midstream
- Existing Pipelines
- Midship Mainline

CHENIERE
Midstream Holdings, Inc.
General Project Overview
MIDSHIP Project
Date: 11/2010

Project Overview

Cheniere Midstream plans to develop an approximately 333-mile pipeline originating in Kingfisher County, Oklahoma and ending in Cass County, Texas.



A worker at a current Cheniere facility

As currently contemplated, the proposed development would include:

- Pipeline capacity of up to 1,400 million cubic feet per day
- 333 miles of 30-inch and 36-inch diameter mainline
- Up to seven lateral pipelines to multiple gas processing plants
- Four compressor stations (three in Oklahoma and one in Texas)

Approximately 70 percent of the proposed pipeline infrastructure would run parallel to existing pipelines and other rights-of-way. Land owners would be compensated for both permanent and temporary easements.

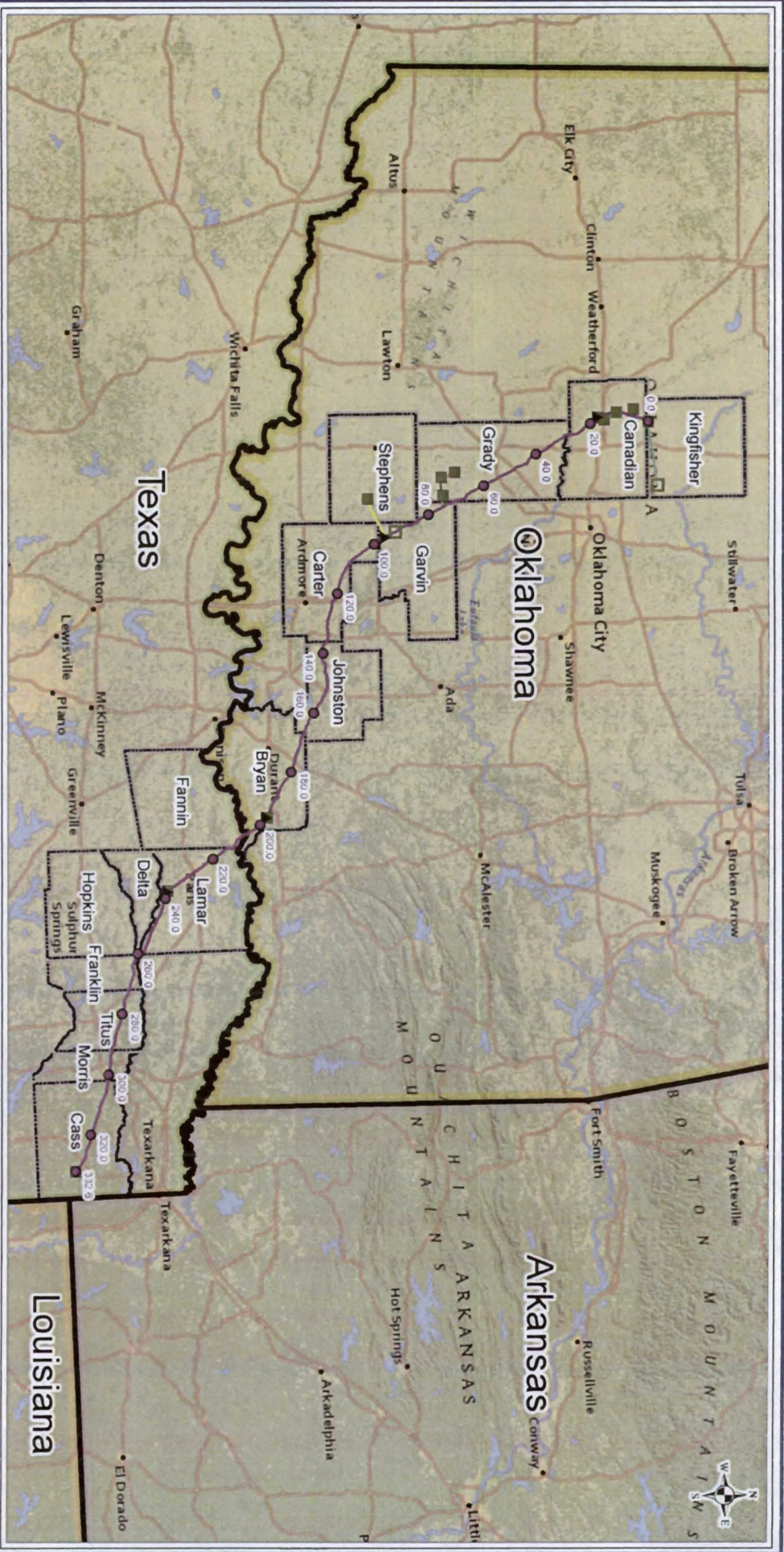
Proposed Timeline

- Commence regulatory process – first quarter of 2016
- Conduct community open house meetings along route – first half of 2016
- Commence construction – second half of 2017
- Commercial operations – last quarter of 2018



Photo is an artistic representation and does not represent actual size of materials





- Mile Post
- MIDSHIP Mainline
- Bradley Lateral
- Chisholm Lateral
- Calumet Lateral
- Cana Lateral
- Chitwood Lateral
- Cox City Lateral
- Valma Lateral
- ▲ Compressor Station
- Existing 3rd Party Processing Plant
- Proposed 3rd Party Processing Plant



Cheniere MIDSHIP Pipeline Project

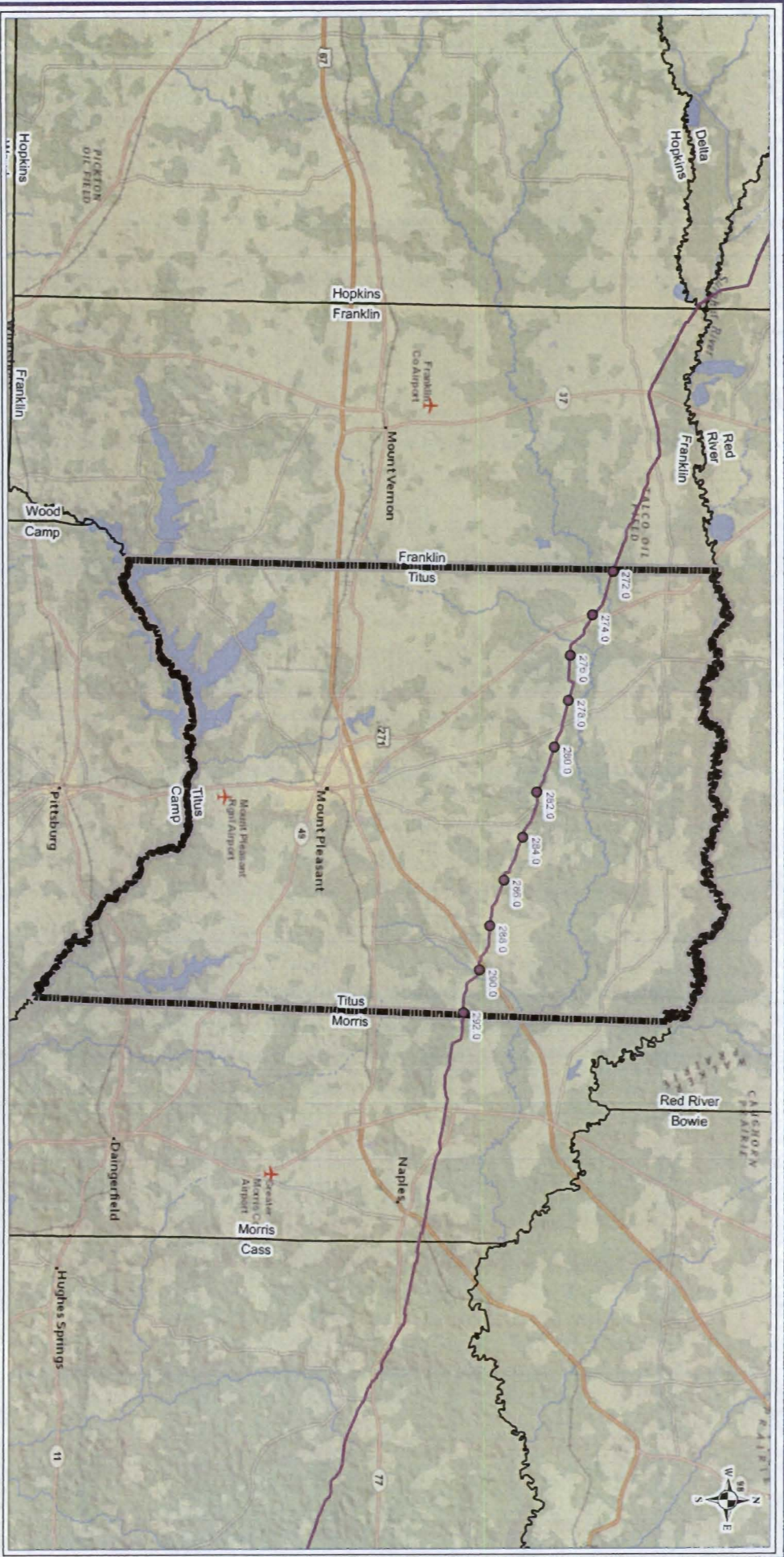
COUNTRY: VARIOUS
 STATE: OKLAHOMA & TEXAS
 PROJECTION: NAD 83 UTM
 ZONE 14N & 15N US FEET
 DRAWN BY: TRC PIPELINE SERVICES
 GIS
 CHECKED BY: TRC PIPELINE SERVICES
 ENGINEERING & GIS



DATE: 12/20/15

SHEET

1 OF 11



- Mile Post
- MIDSHIP Mainline
- Chishom Lateral
- Calumet Lateral
- Cana Lateral
- Chilwood Lateral
- Cox City Lateral
- Bradley Lateral
- Velma Lateral
- ▲ Compressor Station
- Existing 3rd Party Processing Plant
- Proposed 3rd Party Processing Plant



Cheniere MIDSHIP Pipeline Project

COUNTY: TITUS
 STATE: TEXAS
 PROJECTION: NAD 83 UTM
 ZONE 15N US FEET
 DRAWN BY:
 TRC PIPELINE SERVICES
 GIS
 CHECKED BY:
 TRC PIPELINE SERVICES
 ENGINEERING & GIS



DATE: 1/20/11
 SHEET: 11
 14/01/11